

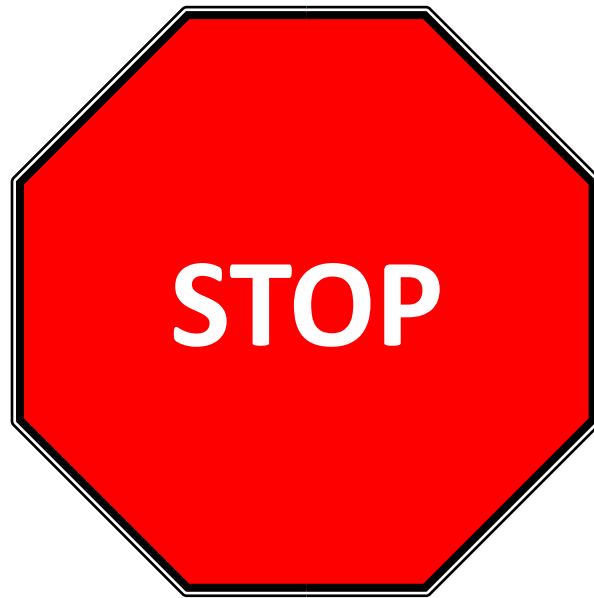


**2025 Camporee Guide**

# Quest for the Holy Grail



**Orange County Council  
Pacifica District Camporee  
April 4-6, 2025**



### Or at least slow down.....

- Stop at the Camp Entrance before proceeding (headquarters)
- Be courteous to Firestone staff
- Be courteous to Camp staff
- Obey all posted speed limits within FSR (**15/25 MPH** where signed)
- Drive Safely / Drive Slowly
- Do not exceed **5 MPH** within the Camporee campground and when entering / departing camp
- Traffic Flow in camp is **ONE WAY**
- Do not double park, please drop off Scouts, Scouters, and Equipment and move to the parking area as ***safely*** and ***quickly*** as possible for Scout and Family safety
- All cars and trucks **MUST** be backed it to parking spots
- Saturday gate opens at 7:30am
- Last day to register **3/21/25**

# Contents

|  |            |
|--|------------|
| <b>Camporee</b> .....                                      | <b>4</b>   |
| <b>Camporee Theme</b> .....                                | <b>4</b>   |
| <b>Location</b> .....                                      | <b>4</b>   |
| <b>Dates and Times</b> .....                               | <b>4</b>   |
| <b>Registration</b> .....                                  | <b>4</b>   |
| <b>Logistics</b> .....                                     | <b>4</b>   |
| <b>Costs</b> .....   | <b>5</b>   |
| <b>Required Forms</b> .....                                | <b>5</b>   |
| <b>Road Conditions</b> .....                               | <b>5</b>   |
| <b>Hazards</b> .....                                       | <b>5</b>   |
| <b>Medical Care</b> .....                                  | <b>5</b>   |
| <b>Fires / Fire Safety</b> .....                           | <b>5</b>   |
| <b>Quiet Hours</b> .....                                   | <b>6</b>   |
| <b>Gateway / Pioneering Project Safety</b> .....           | <b>6</b>   |
| <b>Adult Volunteer Training</b> .....                      | <b>6</b>   |
| <b>Camporee Method</b> .....                               | <b>6</b>   |
| <b>Camporee Youth Leaders</b> .....                        | <b>6</b>   |
| <b>Camporee Adult Advisors</b> .....                       | <b>7</b>   |
| <b>Camporee Schedule and Troop Event Assignments</b> ..... | <b>7</b>   |
| <b>Detailed Schedule</b> .....                             | <b>TBD</b> |
| <b>Camp Layout (reference not finalized)</b> .....         | <b>11</b>  |
| <b>Detailed Camp layout</b> .....                          | <b>12</b>  |
| <b>Morning Event Briefings</b> .....                       | <b>12</b>  |
| <b>Afternoon Event Briefings</b> .....                     | <b>13</b>  |
| <b>Evening Event Briefings</b> .....                       | <b>13</b>  |
| <b>Troop Event Responsibilities</b> .....                  | <b>13</b>  |
| <b>Event Guidance for Troops and Leadership Team</b> ..... | <b>14</b>  |
| <b>Important Web Links</b> .....                           | <b>15</b>  |
| <b>Gateway and Campsite Inspection Primer</b> .....        | <b>15</b>  |
| <b>Camporee Arrival Form</b> .....                         | <b>16</b>  |
| <b>Pioneering Project Score Sheet</b> .....                | <b>TBD</b> |
| <b>2025 Camporee Feedback Form</b> .....                   | <b>17</b>  |
| <b>California Rifle and Shotgun Permission Form</b> .....  | <b>18</b>  |

# Camporee

Thank you for your interest in participating in Pacifica District's annual Camporee. The excitement begins on Friday with the arrival of hundreds of Scouts, Crews, and adult Scouters. Ranges will be used Saturday morning and afternoon as needed for competition then will be available for open practice. Saturday evening is the Campfire Program highlighted by skits, songs, and flag retirement. It all culminates with a Scouts' Own and Camporee awards presentation Sunday morning.

## Camporee Theme

The Camporee theme for 2025 is **Quest for the Holy Grail**

## Location

- Firestone Scout Reservation, 19001 Tonner Canyon Rd, Brea, CA 92821 GPS location for accuracy: 33°56'33.0"N 117°50'52.0"W
- Campsite: Loma Linda and Wyote

## Dates and Times

- Friday April 4 through Sunday April 6, 2025
- Camporee starts 2:00pm on Friday
- Camporee closes at 11:30am on Sunday

## Gate Times

- You may depart Firestone Scout Reservation at any time day or night
- Friday entrance opens at 2 p.m. and closes at 9 p.m.
- Saturday entrance opens at 7:30 a.m. and closes at 9 p.m.
- Sunday entrance opens at 8:00 a.m. and closes at 12 noon.

## Valuables

- Lock your car to prevent casual theft
- Keep valuables out of sight or with you

## Registration

- Register online at: <https://scoutingevent.com/039-95725>

## Logistics

- Troop Trailers may remain in camp with all wheels chocked, but the later your time of arrival the more logistically difficult this becomes. No vehicles in camp area.
- Parking locations – see map on page 15 – preferred is north of campsite
- Potable water is located at 15 spigots spread in Loma Linda and another 2 in Wyote field.
- Food storage – minimum – food stored in a secured tote; preferred food stored in troop trailer or vehicle. **Food should not be left unattended**
- Trash **must** be removed from the individual campsites daily. **Pack It In - Pack It Out.** Similar to food – trash should be secured in a tote, trailer or vehicle.

## Costs

- Two Nights \$39 for two nights camping, received on or before 3/14/25
- \$60 for two nights camping, received after 3/14/25
  
- One Night or Day \$32 for one night camping, received on or before 3/14/25
- \$42 for one night camping, received after 3/14/25

LAST DAY TO REGISTER 3/21/25

## Required Forms

- Medical forms A, B1 and B2 (remain in camp). *Note Form C is not required* Link: [ScoutsBSA Annual HealthandMedical Form](#)
- Camporee Arrival Form (located at the end of this document)
- Range and Targets Release Form (located at the end of this document)
- Camporee Feedback Form (located at the end of this document)

## Road Conditions

Loma Linda campsite is located 5.1 miles from the entrance gate on a paved and unpaved road. With a maximum speed limit of (**15/25 MPH**), please observe all posted speed limit signs.

## Hazards

Do not bother any of the natural plants or wildlife you may find around the reservation. Remember your Outdoor Code! There are deer, coyotes, goats, raccoons, possums, gophers, field mice, ticks, scorpions, spiders and snakes.

- **Ravines and Gullies may contain Poison Oak.**
- **Rattlesnake and cougar sightings should be reported immediately to an adult Scout leader, Camporee Adult Advisor and the Camp Ranger.**
- **Stay clear and DO NOT surround any animal to prevent its escape. Be safe not sorry!**

## Medical Care

First Aid will be available at the Camporee Campsite. All severe injuries / hurry cases must be reported immediately to both the Unit Leader and Camporee Adult Advisor for prompt action. Please note that cell phone service may not be readily available.

- Nearest Urgent Care: Brea Urgent Care - 395 W Central Ave, Brea; 714-494-2828
- Nearest Hospital: Placentia-Linda Hospital-1301 N Rose Dr, Placentia; 714-9932000

## Fires / Fire Safety

Unattended fires are not permitted at any time – this includes propane, charcoal, etc.

### **NO WOOD FIRES.**

Weather permitting, charcoal cooking **IS** permitted with the use of proper equipment and only if raised off the ground by 6 inches or more.

Propane firepits ARE permitted in camp with Appropriate SAFETY. If you want to use Friday night you **MUST prove you have a fire extinguisher to Staff.**

Water / Sand buckets and fire extinguisher(s) [A-B-C rated] are required in each campsite and are a part of the Campsite Inspection. All Fire Safety equipment must be in plain sight and easy to reach.

## Quiet Hours

Quiet hours being at 10:30 pm. Pioneering Projects or gateway construction may continue until **12:00 pm**, but troops must keep to a very low noise level and an adult must be present at all times. We are asking Troop to limit excessive bright lighting and generators to those of 70db or less such as an inverter generator starting at 10:30 pm. If at all possible, keep generators away from sleeping areas. If possible, consider an acoustic baffle.

## Gateway / Pioneering Project Safety

First Aid will be available at the Camporee Campsite. Please note that cell phone service may not be readily available. All construction **must** end at **12:00pm**.

- Adult leader knowledgeable in lashings must be present at all times during the construction.
- All stakes must be covered or blunted.
- Support lines must have safety markers.
- No climbing above 6 feet will be allowed.
- If a structure is more than 6 feet high then the entire structure will need to be assembled on the ground, lifted into place (using adequate safety lines / manpower), and secured safely.

## Adult Volunteer Training

- **IOLS** offered April 4-5 at Firestone, campsite is Memorial Mesa  
<https://scoutingevent.com/039-96504>

## Camporee Method

Pacifica Camporee will consist of a core leadership group of Scouts (Senior Patrol Leader and Assistants), two or more adult advisor(s). Morning and afternoon events will be planned and conducted by the troops of the Pacifica District.

## Camporee Youth Leaders

| Position                    | Name             |
|-----------------------------|------------------|
| Senior Patrol Leader (SPL)  | Cade Jobse       |
| Assistant SPL (ASPL)        |                  |
| Chaplain's Aid / Scouts Own | Annaleah LaParne |
| Spirit & Campfire           | Max Okerman      |
| SPL/SM Games                |                  |
| Quartermaster               | Ryan Yeung       |

## Camporee Adult Advisors

The following is contact information for the key adult advisors

| Position               | Name            | Email  | Phone        |
|------------------------|-----------------|--|--------------|
| Adult Advisor          | Kevin McCarthy  | <a href="mailto:kmc3rt24@gmail.com">kmc3rt24@gmail.com</a>               |              |
| Adult Advisor          | David Walsh     | <a href="mailto:dwalsh@socal.rr.com">dwalsh@socal.rr.com</a>             |              |
| Asst. Adult Advisor    | Nicole Jobse    | <a href="mailto:nicolejobse@gmail.com">nicolejobse@gmail.com</a>         |              |
| Asst. Adult Advisor    | Jamie Yeung     | <a href="mailto:yeungfamily05@gmail.com">yeungfamily05@gmail.com</a>     |              |
| Asst. Adult Advisor    | Nelli Greenspan | <a href="mailto:nelligreenspan@gmail.com">nelligreenspan@gmail.com</a>   |              |
| Asst. Adult Advisor    | Robert Batman   | <a href="mailto:robert.l.batman@gmail.com">robert.l.batman@gmail.com</a> |              |
| DE – Pacifica District | Todd Lassig     | <a href="mailto:todd.lassig@scouting.org">todd.lassig@scouting.org</a>   | 714-623-0333 |

## Camporee Schedule and Troop Event Assignments

### Friday Check-In

Please arrive no earlier than 2:00pm on Friday. On arrival, check-in with Camporee Headquarters to be escorted to your campsite. Camporee Arrival Form and Range and Targets forms can be submitted at headquarters after arrival.

- Drive Safely / Drive Slowly - Obey all posted speed limits within FSR (**15/25 MPH**)
- Do not exceed **5 MPH** within the Camporee campground and when entering / departing camp
- Campsite drop off will follow the Gear/Scout drop off method - cars should not be parked in front of a campsite.
- Each unit's campsite traffic control is the responsibility of the Scout Master or designated leader.
- All vehicles must be backed in parked facing out toward the access road as a mandatory fire safety precaution.
- The Camporee Staff may request that you relocate your vehicle, especially if it is parked in front of your campsite gate. If a staff member asks you to move your vehicle, please be courteous and comply with the request. Failure to comply will result in direction regarding parking or minimizing traffic congestion could result in negative points being applied to the unit's Presidential score.

### Friday Cracker Barrel

All SMs / SPLs are invited to attend the Friday evening cracker-barrel for some light refreshments and to obtain any updated information / announcements / schedule changes, etc. All information should be shared with your unit leaders / Scouts upon your return to your unit's campsite. If you have not already done so, turn in your Camporee Arrival Form and Range and Targets forms.

### Saturday Opening and Closing Flags

Saturday arrival – Gate opens at **7:30 am** – **Please note that we have adjusted events times slightly later to accommodate Saturday morning arrivals**

Field (Class A) uniforms are to be worn for opening and closing Flag Assemblies.

### Saturday Events and Spirit Rallies Attire

Appropriate themed (Quest for the Holy Grail) attire or CLASS B uniform. All patrol members are expected to dress alike. Appropriate themed clothing and theme-related items (e.g., accessories, props) within the patrol

are **encouraged**. We are interested in aspects such as neatness, completeness and uniformity of Scout uniforms / themed attire and patrol spirit.

Special clothing items that may provide a competitive edge such as running cleats are not permitted.

Themed items may not include weaponry or replicas of any type (e.g., firearms, swords, spears, etc.}. Such items are NOT permitted and will be confiscated.

### **Scoutmaster / Senior Patrol Leader Competition**

Staff strongly encourages you to bring a pair of work gloves. Your hands may be on the ground.

### **Spirit Animal Rules**

Embellishments added to the Spirit Animal by the winning Troop are encouraged. All embellishments must be scout appropriate. Therefore, no burning, removal of parts, no holes, no duct tape adhered to the animal. Tape/Duct tape may be used (capes, pants, shoes, etc.) but not permanent adhered to the animals hide. It is recommended that the Troop come prepared to add something to the Spirit Animal.

### **Troop Event Assignments**

Each Troop in the district will volunteer to conduct one of the following events. Each event should be creative but also incorporate Scout-related skills or goals.

Additional competition events are being evaluated by the Camporee youth staff.

- Coconut Bowling Pending

### **Saturday Morning Scored Events**

- First Aid Troop 1
- Kim's Game Troop 90
- Field of Evil Bunnies Troop 189
- Height and Distance Troop 227
- Knots Troop 319
- Tent Building Troop 412
- Cross the River Ship 711
- Range and Targets Staff / Firestone

### **Saturday Afternoon Events**

Afternoon Fun/Competition Events:

- Ultimate Frisbee Troop 567

### **Saturday Range and Targets**

Archery and slingshot from 9 am to 4 pm (Included in price)

Patrols are allowed one practice round for archery.



### **Saturday Campfire / OA Call Out**

All Scouts and Scouters should “Be Prepared” in advance (take warm clothing, jackets, flashlight / headlamp, etc.) for the OA Serpentine (see Sat. evening schedule) and Campfire / Call Out. The Serpentine is a line made up of both youth Scouts and adult Scouters only. It begins in the midway area and increases in size as it passes each troop’s campsite where the Scouts / Scouters join the line (in silence) and who are then led to their destination (the bowl area).

### **Sunday Scouts’ Own**

Everyone is welcome to attend. Please wear your class A uniform.

### **Sunday Awards Ceremony**

First, Second & Third Place ribbons for competitive events / activities will be awarded at the Sunday morning troop gathering. To be eligible for the “Presidential Award” (for the top-ranked competitive unit), each unit must 1) Assemble a gateway; 2) Set-up camp for camp inspection; and 3) All Scout Patrols, except the youth running a Troop Event, must compete in competitive events / scored activities including Patrol Flag competition, Golden Pie Tin and Golden Spoon. It is strongly recommended to participate in ALL competitions.

The following will be considered when scoring for Best Overall Patrol:

- Cross the River
- First Aid
- Kim’s Game
- Knots
- Field of Evil Bunnies
- Tent Building
- Height and Distance
- Range and Targets
- Patrol Flag
- Golden Pie Tin
- Golden Spoon

Note: Patrols are encouraged to participate in all events. The Camporee staff ask that all patrols be scored identically and fairly.

The following will be considered when scoring for Presidential (Troop):

- Average Patrol Score (see above)
- Gateway
- Campsite
- Spirit

Note: Adult leadership are requested to support Gateway and Campsite Inspection and scoring. The Camporee staff kindly ask participants to not score their own Units.

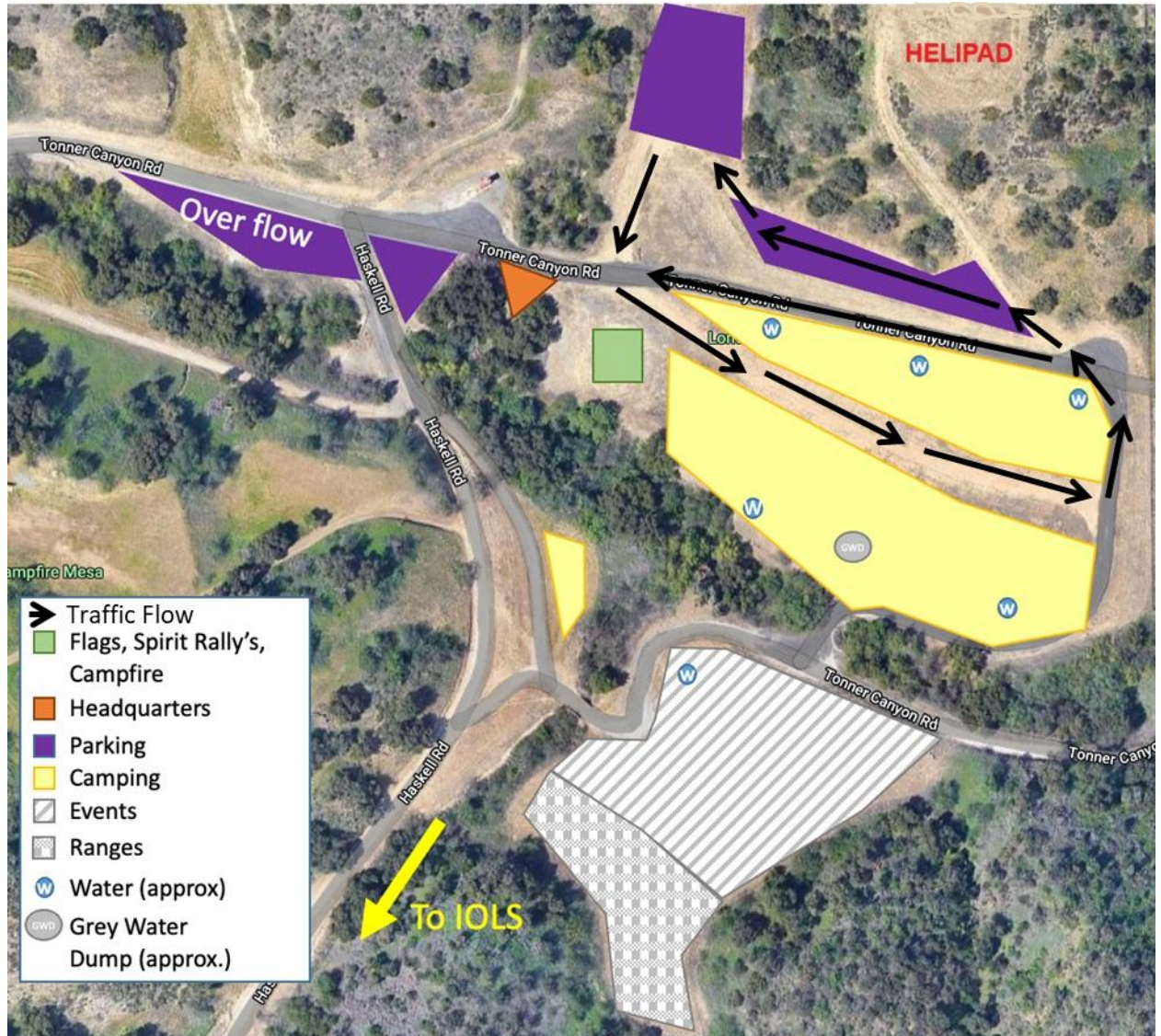
### **Sunday Check-out**

All units must have their campsites inspected before leaving camp. After cleaning your campsite (including all designated common areas assigned to your Troop), go to the Registration area to request an inspection. All units are requested to complete the 2025 Camporee Feedback form included in this guidebook.

Please drop off the completed form when you are ready to check out. (Don't forget to pick up your unit's patches & participation ribbon too.)

# Detailed Schedule - **Currently under development by the Camporee youth staff**

## Camp Layout



Recommend parking in purple areas as they are much closer and easier to access for campers.

No parking on Emergency helicopter pad (**HELIPAD**) or road leading up to it.



## Detailed Camp layout



## Morning Event Briefings

### Cross the River

You and your patrol need to cross a shallow river filled with pretend quicksand represented by 16 feet of tarp. If any part of a scout touches the river, they are out!

### Field of Evil Bunnies

One team member must verbally guide a blindfolded teammate through the Bunny Field without that teammate touching a Bunny.

### First Aid

Know your Tenderfoot, Second Class and First-Class first aid requirements. You will be asked to solve a first aid scenario. Be ready to walk through the steps.

### Kim's Game

You and your patrol will have to remember the items on the tarp. The tarp will then be covered and you will be asked what items you saw. Points will be given for correct answers.

### Knots

Know your Basic Scout knots: Overhand, Square, Two-half Hitch, Taut Line, Bowline, Clove Hitch, Timber Hitch and Sheet Bend. It's a race against the clock, accuracy counts!

## **Tent Building**

Know how to protect yourself from the weather. You will be given a period of time to build a tent from tarps, stakes and rope.

## **Height and Distance**

Come prepare to measure a tall pole and a distance along the ground.

## **Range and Targets**

Take your best shot! Archery will be scored – Average of 2-4 Scouts (to be determined) per patrol will be used for average patrol score. Note the station holds only 7-8 participants and will take 15-20 minutes per patrol. Some patrols may need to return in the afternoon.

## **Scoring**

Patrols – To reduce confusion between merging, changing, incomplete and inconsistent patrol names each unit's patrol will be assigned a unique number (Troop 1234 Patrol 1, Patrol 2, etc.). **Your Patrols will need to know their Patrol Number.**

Scoring will be either by points or by time, not both

- Time must start from time 0 and be a positive value, where the shortest time (closest to 0:00:00) is the best time.
- Points are scored from 0 to a maximum number, where 0 is the worst score.

Score sheets will be provided. If possible, camp staff will print forms with Patrol names and unit numbers. Please do your best to write legibly. Any errors should be CLEARLY corrected.

## **Afternoon Event Briefings**

### **Ultimate Frisbee**

The aim of the game is to score by having a player on your team catch the Frisbee past the goal line of the other team.

## **Evening Event Briefings**

### **Golden Pie Tin / Golden Spoon**

Please provide sufficient food for 3 people to have a taste of your entry. Example – a single chili cheese burger would be sufficient but one street taco would not be sufficient.

## **Troop Event Responsibilities**

Event planning and implementation is a learning process. All Troops are requested to establish Adult Advisor(s) and a youth Camporee leader (may be your Senior Patrol Leader). The adult advisor should coach and mentor the youth leader on the following: a) how to carry out an event with about 400 participants or approximately 30-40 patrols in a period of approximately 3 hours; b) size and location requirements; c) consideration for time allotment you've been provided; and d) logistical complexity. Troops will be responsible for scoring their own event.

Events need to be well tested and conducted with consistency. Coaching and mentoring may be required to help teach Scouts the value of consistency and to ensure follow through. Events need to be staffed by

experienced Scouts, who understand and have mastered the skill they are judging. Assistance can be provided in the development of scoring sheets and criteria.

## **Event Guidance for Troops and Leadership Team**

### **Approach**

- Enable the youth to develop and execute an event using E.D.G.E. methodology.
- Key opportunities for Scout growth:
  - Project Planning
  - Scope Requirements
  - Testing
  - Documentation
  - Execute a plan
  - Running a Scout event
  - Close Out

### **Project Planning**

- Establish idea(s)
- Scope Requirements & Understand Timeline
- Document Dependencies
- Explore Relationships to other Requirements

### **Scope Requirements**

- Utilizing Standard Operating Procedures, establish the following
  - Who
  - What
  - Where
  - Why
  - When
  - How

### **Testing**

- Did the plan work as envisioned?
- Did you have all the right resources?
- Does it meet the needs of your recipients?
- Is there sufficient clarity and definition?
- Is it too hard? Is it too easy?
- Consider the number of participants & time available to run the event, is it feasible?
- Does scoring work as intended?
- Can it be improved?

### **Execute a Plan**

- Know that your logistics are in place.
- Staff, Supplies, Space, etc.

- Implement process to ensure first participant is handled the same as the last participant.
- Score evenly and consistently with appropriate expertise.

### Running a Scouting Event

- Does your event accommodate the number of participants, in the time given?
- Do you have enough stations?
- How much space is needed? Consider the event and anything you don't want to be seen or heard in advance.
- Is your Standard Operating Procedure (SOP) inclusive of required people and gear?
- Does your scoring sheet provide your staff the best opportunity to be consistent?
- Are you setup to judge the first and the last participants equally with easy to interpret criteria?

### Close Out

- Start – Stop – Continue
- What went as planned, what didn't go as planned, what can be improved upon?
- Celebrate!

### Important Web Links

- Example 2018 SOPs & Guides <https://onedrive.live.com/?authkey=%21AF7bKeH03N-WxQ4&id=D4366B039270FD95%21115&cid=D4366B039270FD95>
- Age-Appropriate Documentation: <https://filestore.scouting.org/filestore/HealthSafety/pdf/680-685.pdf>
- Guide to Safe Scouting: <https://www.scouting.org/gss/>
- Registration: <https://scoutingevent.com/039-95725>

### Campsite and Pioneering/Gateway Inspection Primer

Both documents are under review by the youth & adult Camporee staffs - the inspection form details will be included in the next version of the Leader Guide

#### Pioneering/Gateway

For all notes, please reference 14<sup>th</sup> Edition of the Scout Handbook

- **Whipping**, page 361. “the permanent way to protect ropes from unraveling is by whipping or fusing.” When referencing material for whipping, the book references a “piece of strong cord”
- **Lashings**, page 371-378. The following are lashings referenced in the Scout Handbook and that are eligible for points. Square (pg. 373), Mark II (pg. 374), Shear (pg. 376), Diagonal (pg. 376), Tripod (pg. 377), Round (pg. 377), Floor (pg. 378).
- **American Flag placement.** In facing the entry from the exterior of camp, the American flag should be placed on the left of any other flags, flying highest.

#### Campsite

- See link above for the current version of the Guide to Safe Scouting.
- Review Campsite Inspection form below
- Review Gateway Inspection form below

# Camporee Arrival Form

What would Camporee be without forms! These forms are essential to the event scoring process.

Please provide upon arrival. Please remind your Scouts NOT to change patrol names after the form is submitted.

|             |  |
|-------------|--|
| Unit #      |  |
| Scoutmaster |  |

| Patrol Names Please note if this is a 1 <sup>st</sup> year patrol |  |
|---|--|
| 1   | <input type="checkbox"/> First Year Scout Patrol |
| 2   | <input type="checkbox"/> First Year Scout Patrol |
| 3   | <input type="checkbox"/> First Year Scout Patrol |
| 4   | <input type="checkbox"/> First Year Scout Patrol |
| 5   | <input type="checkbox"/> First Year Scout Patrol |
| 6   | <input type="checkbox"/> First Year Scout Patrol |
| 7   | <input type="checkbox"/> First Year Scout Patrol |
| 8   | <input type="checkbox"/> First Year Scout Patrol |
| 9   | <input type="checkbox"/> First Year Scout Patrol |
| 10  | <input type="checkbox"/> First Year Scout Patrol |

### Items to remember

- Let your drivers know they will be directed to the closest drop off point for your campsite, when they arrive at the main stop sign.
- Parking is located to the north side of camp. On the map they are colored Purple.
- Trailer and towing vehicle will be allowed to park within the campsite with chocks on all wheels. Please know the later you arrive, the more difficult it may be to enter, or it may become impossible.

Total Score \_\_\_\_\_



## 2025 Camporee Feedback Form



Please help us to improve future Camporees by completing this survey and dropping it off at REGISTRATION when your unit checks-out. Thank you!

**1 = Poor 5 = Great 1 2 3 4 5**

| Questions   | Ranking  |
|---|----------|
| <b>Pre Camporee</b>   |          |
| 1 Was the Camporee information clear / accessible? (District website, Camporee leader's guide, Black Pug) |          |
| <b>CAMPSITE</b>   |          |
| 2 Rate "Firestone" as a Camporee location spot.   |          |
| 3 Did Registration (Check-in /Check-out) go smoothly?   |          |
| 4 Was your campsite size adequate?  |          |
| 5 Were the toilet facilities adequate?  |          |
| 6 Was the parking adequate?   |          |
| <b>PROGRAM</b>  |          |
| 7 Did the Camporee Program meet with your overall expectations?   |          |
| 8 Rate the Morning (competitive skills) Events.   |          |
| 9 Rate the Afternoon (non-competitive) Events.  |          |
| 10 Rate the SM / SPL Events   |          |
| 11 Rate the overall Campfire program.   |          |
| 12 Rate the Awards Ceremony (ribbons)   |          |
| 13 Rate the Scouts Own  |          |
| <b>PERSONNEL</b>  |          |
| 14 Was the Staff courteous and helpful?   |          |
| 15 Did Security / Parking Control perform its function?   | Yes / No |
| <b>MISCELLANEOUS</b>  |          |
| 16 Did the Scouts have a good time?   | Yes / No |
| 17 Do you plan to attend next year?   | Yes / No |

*Please list any names (unit no. & full name) of adult Scouters that might consider volunteering for Camporee Staff next year.*

Comments / Suggestions: **(Use back of form if more space is needed)**



# BOY SCOUTS OF AMERICA®

## CALIFORNIA RIFLE AND SHOTGUN PARENTAL/LEGAL GUARDIAN PERMISSION FORM

Unit #: \_\_\_\_\_ Last Name: \_\_\_\_\_ First Name: \_\_\_\_\_

I, \_\_\_\_\_, parent or legal guardian of \_\_\_\_\_

*(Print Name of Parent or Legal Guardian)* *(Print Name of Child)* hereby give my child express permission and consent to be loaned and possess firearms (handguns and long guns) and ammunition to engage in lawful, recreational sport, including target practice, and/or a course of instruction in the safe and lawful use of a handgun. (Cal. Penal Code §§ 27945, 29610, 29615, 29650, 29655; 18 U.S.C § 922(x)). As used in this form, “firearms” include any handguns, long guns, or shotguns that may lawfully loaned to and possessed by a minor under state and federal law.

I also give my child express permission and consent to possess, and for a person to loan to my child, a “BB device” as defined in Cal. Penal Code \* 16250. (Cal. Penal Code § 19915).

This consent is valid, absent my express revocation thereof, for the calendar year of \_\_\_\_\_.  
*(Calendar Year)*

A photocopy or facsimile of this written consent will serve as an original.

I represent that I am (1) the parent or legal guardian of the minor named above and (2) not prohibited by Federal, state, or local law from possessing a firearm. I agree to indemnify and hold harmless the Boy Scouts of America, and any local Council and all officers, members, employees, and volunteers thereof, from all losses, damages, causes of action, cost and expenses, arising from any false statements or representations made by me herein.

**Please bring at least four (4) copies of this form to camp with your child. One (1) copy must remain in your child’s possession at all times while he or she possesses any firearms or ammunition, and one (1) copy should be provided to the owner of the firearm.**

\_\_\_\_\_

\_\_\_\_\_

**Signature of Parent or Legal Guardian**

**Date**

INSTRUCTIONS: MUST BE CLEAR and LEGIBLE.....Enter EITHER:

- Points: Integers Only 0=worst score (ex. 0, 32, 57, 71, 96, etc.) OR

- Time: Time starts from 0 & increases (mm:ss.ss (01:33.26) or seconds (93.26))

| #  | Unit Number | Camporee Patrol ID | Patrol Name | Points or Time (Circle One) |
|----|-------------|--------------------|-------------|-----------------------------|
| 1  | Ship 711    | Patrol-1           |             |                             |
| 2  | Troop 1     | Patrol-1           |             |                             |
| 3  | Troop 1     | Patrol-2           |             |                             |
| 4  | Troop 1     | Patrol-3           |             |                             |
| 5  | Troop 1     | Patrol-4           |             |                             |
| 6  | Troop 106   | Patrol-1           |             |                             |
| 7  | Troop 189   | Patrol-1           |             |                             |
| 8  | Troop 189   | Patrol-2           |             |                             |
| 9  | Troop 189   | Patrol-3           |             |                             |
| 10 | Troop 189   | Patrol-4           |             |                             |
| 11 | Troop 189   | Patrol-5           |             |                             |
| 12 | Troop 227   | Patrol-1           |             |                             |
| 13 | Troop 227   | Patrol-2           |             |                             |
| 14 | Troop 319   | Patrol-1           |             |                             |
| 15 | Troop 319   | Patrol-2           |             |                             |
| 16 | Troop 319   | Patrol-3           |             |                             |
| 17 | Troop 380   | Patrol-1           |             |                             |
| 18 | Troop 412   | Patrol-1           |             |                             |
| 19 | Troop 412   | Patrol-2           |             |                             |
| 20 | Troop 412   | Patrol-3           |             |                             |